



**Public Works Department**  
115 McDonough Road  
Fayetteville, GA 30214  
Phone: 770-320-6010  
[www.fayettecountyga.gov](http://www.fayettecountyga.gov)

---

June 25, 2025

**Subject: Public Notice for GDOT PI # 0017813 / Fayette County SPLOST 17TAD**  
Fayette County, State Route (SR) 85 @ 1 Level of Construction  
(LOC); SR 279 @ 1 LOC & Corinth Road @ 1 LOC

To whom it may concern,

As a party previously involved in the public involvement process of the above referenced project, you've been sent this letter as a status update on the project's ongoing development. The purpose of the proposed project is to improve mobility and reduce crash frequency and/or severity.

The project, currently in design, will improve portions of the SR 279, SR 85, and Corinth Road corridors through intersection improvements, road widening, shoulder improvements, an extension of Corinth Road to Carnes Drive, and horizontal geometric and operational improvements to accommodate increased traffic along the corridors. Environmental documentation for the project, in compliance with the National Environmental Policy Act (NEPA), is also underway as part of the design.

Public engagement for the project started as part of Fayette County's 2019 *SR 279 Corridor Study*. More recently, Fayette County held a public meeting on November 15, 2022, and a stakeholder meeting with local Homeowners Associations on November 19, 2022. During these meetings two alternatives were presented.

- Alternative 1 realigned SR 279 to Corinth Road and included significant new road construction and impacts to Butler Road.
- Alternative 2 focused on operational and safety improvements along the existing roads and additional turn lanes and improvement at the intersections of SR 279 and SR 85 and Corinth Road and SR 85.

Both alternatives included sidewalks, shared use paths, and reduced conflict U-turns (i.e., RCUTs) at the intersections of SR 85 and Plantation Drive and SR 85 and the Darnell's Tomatoes driveway. Public feedback supported Alternative 2 as the preferred alternative.

Project updates, including a review of public comment, were provided to the Fayette County Transportation Committee on November 1, 2022, and January 10, 2023. During their January meeting the Committee voted to support Alternative 2.

The alternatives and public feedback were then presented to the Fayette County Board of Commissioners at a public meeting on February 23, 2023. The Board unanimously approved Alternative 2. Following Board approval, the project team proceeded with preparation of the Concept Report.

Based on feedback received during development of the Concept Report the design has seen incremental changes including the extension of existing and proposed turn lanes to meet the current recommended lengths and the addition of turn lanes at Old Road and SR 279. The attached figure shows the project in plan view, including project limits, changes to intersections, proposed paths, etc.

Schedule milestones include the start of right-of-way acquisition in 2026 and the start of construction in 2028.

Please don't hesitate to contact the Public Works Department at [publicworks@fayettecountyga.gov](mailto:publicworks@fayettecountyga.gov) or 770-320-6010 if you have questions.

Sincerely,

A handwritten signature in black ink that reads "P. Mallon". The signature is written in a cursive, flowing style.

Phil Mallon, P.E.  
*County Engineer*

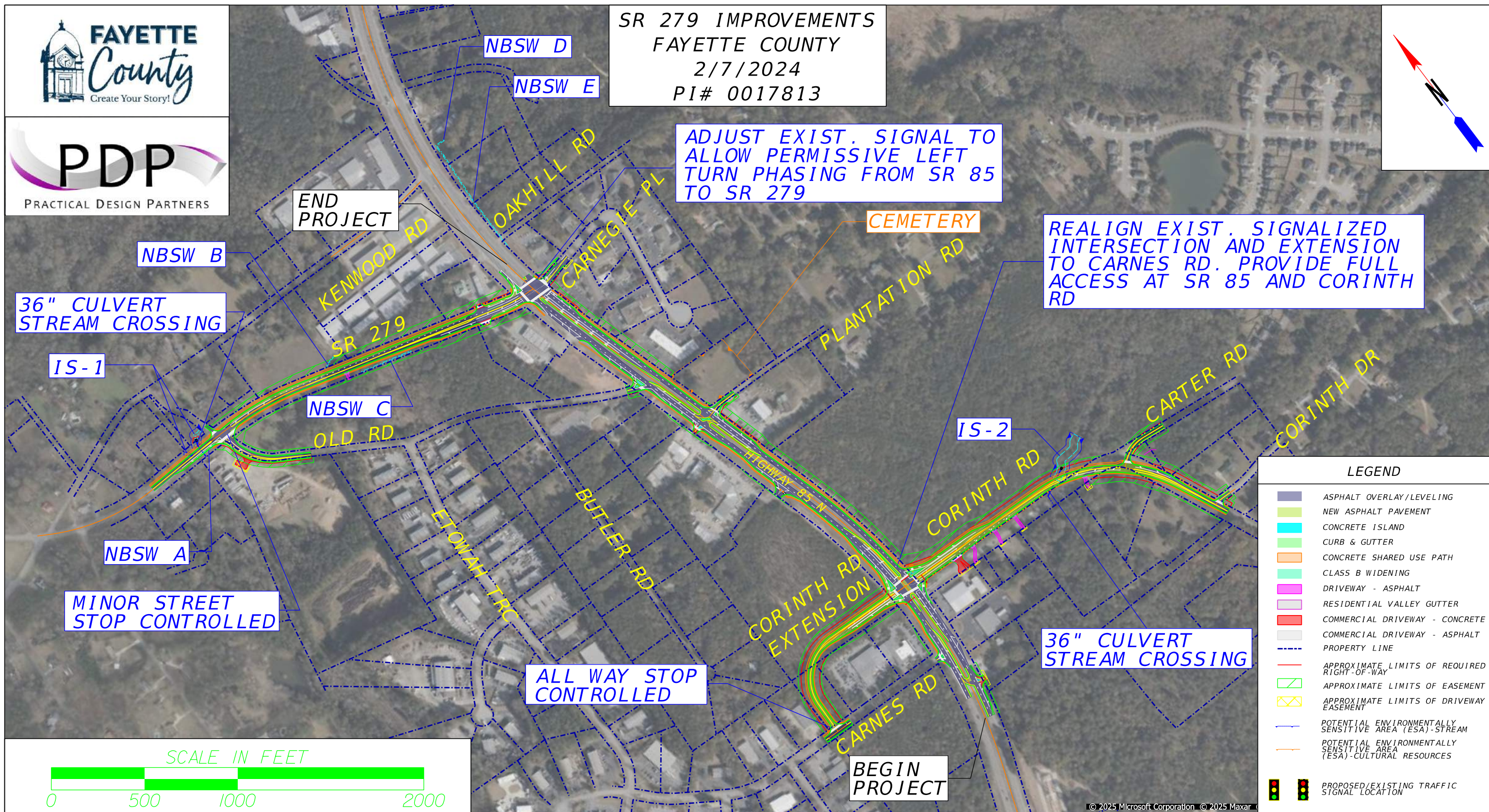
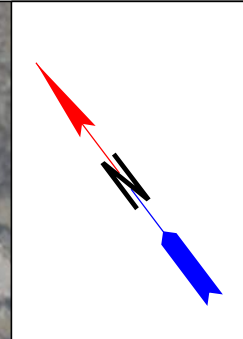
CC: *Angela Snyder, P.E., PDP*  
*April R. McKown, GDOT*

Attachment – Plan View of Project





SR 279 IMPROVEMENTS  
FAYETTE COUNTY  
2/7/2024  
PI# 0017813



LEGEND

- ASPHALT OVERLAY/LEVELING
- NEW ASPHALT PAVEMENT
- CONCRETE ISLAND
- CURB & GUTTER
- CONCRETE SHARED USE PATH
- CLASS B WIDENING
- DRIVEWAY - ASPHALT
- RESIDENTIAL VALLEY GUTTER
- COMMERCIAL DRIVEWAY - CONCRETE
- COMMERCIAL DRIVEWAY - ASPHALT
- PROPERTY LINE
- APPROXIMATE LIMITS OF REQUIRED RIGHT-OF-WAY
- APPROXIMATE LIMITS OF EASEMENT
- APPROXIMATE LIMITS OF DRIVEWAY EASEMENT
- POTENTIAL ENVIRONMENTALLY SENSITIVE AREA (ESA)-STREAM
- POTENTIAL ENVIRONMENTALLY SENSITIVE AREA (ESA)-CULTURAL RESOURCES
- PROPOSED/EXISTING TRAFFIC SIGNAL LOCATION

SCALE IN FEET

